

## Research topics at Nagoya City University that contribute to people's lives

### Research and clinical center for developmental disabilities, for people of all ages Clinical Research Center for Mental Development

In August 2023, the Clinical Research Center for Mental Development was established at Nagoya City University Hospital. It was established using donations from Nagoya City for the purpose of providing medical care and support for people with developmental disorders. The Center's mission is to provide people of all ages with advanced multi-disciplinary medical care for all stages of developmental disabilities, and to work with Nagoya City in developing a support system that is deeply involved in all aspects of daily life, from medical care through to child rearing, education, and employment.

Specific areas of research include (1) medical studies on neurodevelopmental disorders, (2) development of assessment tools usable in medical, health, welfare, and educational settings, (3) development of a neurodevelopmental disorder training program for physicians involved in their treatment, and (4) establishment of developmental support programs for staff involved in supporting neurodevelopmental disorders. Based on the results of research, we also engage in collaborative projects, such as establishing medical care systems, training staff involved with developmental disabilities, providing advice and support on how to address difficult cases, and creating support guidelines for staff on neurodevelopmental disorders for all life stages.

As a research and clinical center for developmental disabilities, the Center will continue to provide advanced medical care and participate in medical studies and research.



### Provision of wide range of infertility treatments Center for Reproductive Medicine

In September 2023, we opened the Center for Reproductive Medicine at the West Medical Center, affiliated with the School of Medicine. As the rapid decline in Japan's birthrate is seen as an urgent social issue, the Center was launched to engage in reproductive medicine in earnest. In the event that hospitalization is necessary during infertility treatment, the West Medical Center is able to accommodate patients, and if pregnancy is achieved, the Obstetrics and Gynecology Department within the same facilities can continue to see the patient until delivery. The hospital is united as one from treatment through to delivery, making it one of the few hospitals in Japan able to provide comprehensive fertility treatments for both men and women. In addition, a support system is in place to aid couples who are unable to have children despite their wishes.



### Making the Nagoya community even more attractive Nagoya Studies Research Center

In April 2023, we opened the Nagoya Studies Research Center. In the course of fostering urban development, social education, historical tourism, and cultural promotion in Nagoya, we also work to academically systematize the modern history of Nagoya and promote further research. In September of 2023, NCU welcomed Yoshihiro Senda, a nationally renowned leading expert on castle archaeology, to teach an endowed course, and this sparked efforts to contribute to the local community by offering a series of lectures open to the public.

The Center aids in differentiating NCU through research on the modern history of Nagoya from an archaeological perspective, and contributes to making the local community more attractive by publishing research findings.



### Request for donations

In addition to NCU's own financial resources and joint research funds from Nagoya City, the Nagoya Advanced Research and Development Center is also funded by the **Nagoya Co-Creation Research Fund**, comprised donations from private companies and local citizens. NCU broadly seeks the cooperation of donors, and makes use of donations to train researchers, improve the research environment, and promote international and clinical research, among other activities.

It is our sincere hope that you understand and agree with the purpose of establishing this Center, and we would greatly appreciate your help in the form of a donation.

### Contact

**Nagoya City University, Research and Development Division** (established in 2024)

Phone Number : 052-853-8639

E-MAIL : ncu-sentanrdc@sec.nagoya-cu.ac.jp

## Nagoya City University

With 10 billion yen in support  
of the **Nagoya Co-Creation Research Fund**

# Nagoya Advanced Research and Development Center



For the most up-to-date information on the Center, please visit the university website.



Bringing smiles into people's lives through research

# An attractive university leading the world toward a brighter future

## Why a focus on "research capabilities" now?

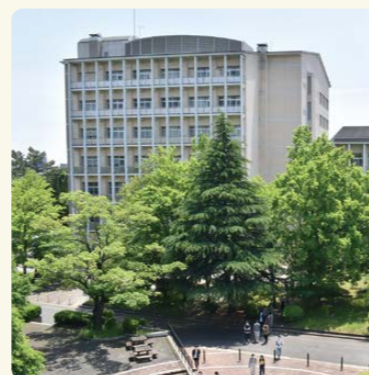
### Research that supports people's lives

Our lives are supported by the findings of various types of research. For example, thanks to the field of medicine, our average life expectancy is steadily increasing due to advances in the development of pharmaceuticals and medical equipment. We can also very tangibly feel that our lives have been enriched by the results of countless studies in the fields of culture, art, nature, biology, and statistics, just to name a few.



### The role of Nagoya City University

As a public university founded by Nagoya City, NCU plays a role in resolving various issues faced by society. NCU is a comprehensive university, composed of eight schools and faculties, seven graduate schools, and five hospitals, that is sincerely committed to its missions of education, research, social contribution, and medical care. NCU has established the Nagoya Advanced Research and Development Center to take on research that supports our daily lives with further pride and passion.



#### About us

■ Comprehensive university composed of eight schools and faculties and seven graduate schools

Medical School / Faculty of Pharmaceutical Sciences / Faculty of Economics / School of Humanities and Social Sciences / School of Design and Architecture / School of Nursing / School of Biology and Integrated Sciences / School of Data Science (newly established in 2023)

■ Five hospitals affiliated with the Medical School with approx. 2,200 beds, one of the most out of all public university in Japan

- Nagoya City University Hospital
- East Medical Center • West Medical Center
- Midori Municipal Hospital (became affiliated in 2023)
- Mirai Kousei Hospital (became affiliated in 2023)

■ Nagoya City University continues to develop

In April 2025, the Medical School will be integrated and reorganized, and we are currently planning to establish a new Department of Health and Medical Care (tentative name) and Program in Medical Rehabilitation Sciences. At the same time, the Nagoya City Rehabilitation Center Hospital is scheduled to become a university hospital. There are also plans underway to establish a new Graduate School of Data Science (tentative name) at the same time, moving us toward further development in the future.

### Enhancing research capabilities together with Nagoya City

The Medium-Term Goals and Medium-Term Plans for the fourth term beginning from 2024 also set forth enhancing research capabilities as an operational goal for NCU to achieve. Under the Grants-in-Aid for Scientific Research program, NCU ranked second among public universities in the number of accepted applications in 2022, and ranked first among public universities in the number of accepted applications from female researchers and young researchers (under 40 years old). Along with the opening of the Center, we will further enhance our research capabilities and contribute to the development of the city of Nagoya City by working broadly to benefit society at large, and we aim to provide solutions to various problems by providing our research findings to the world.

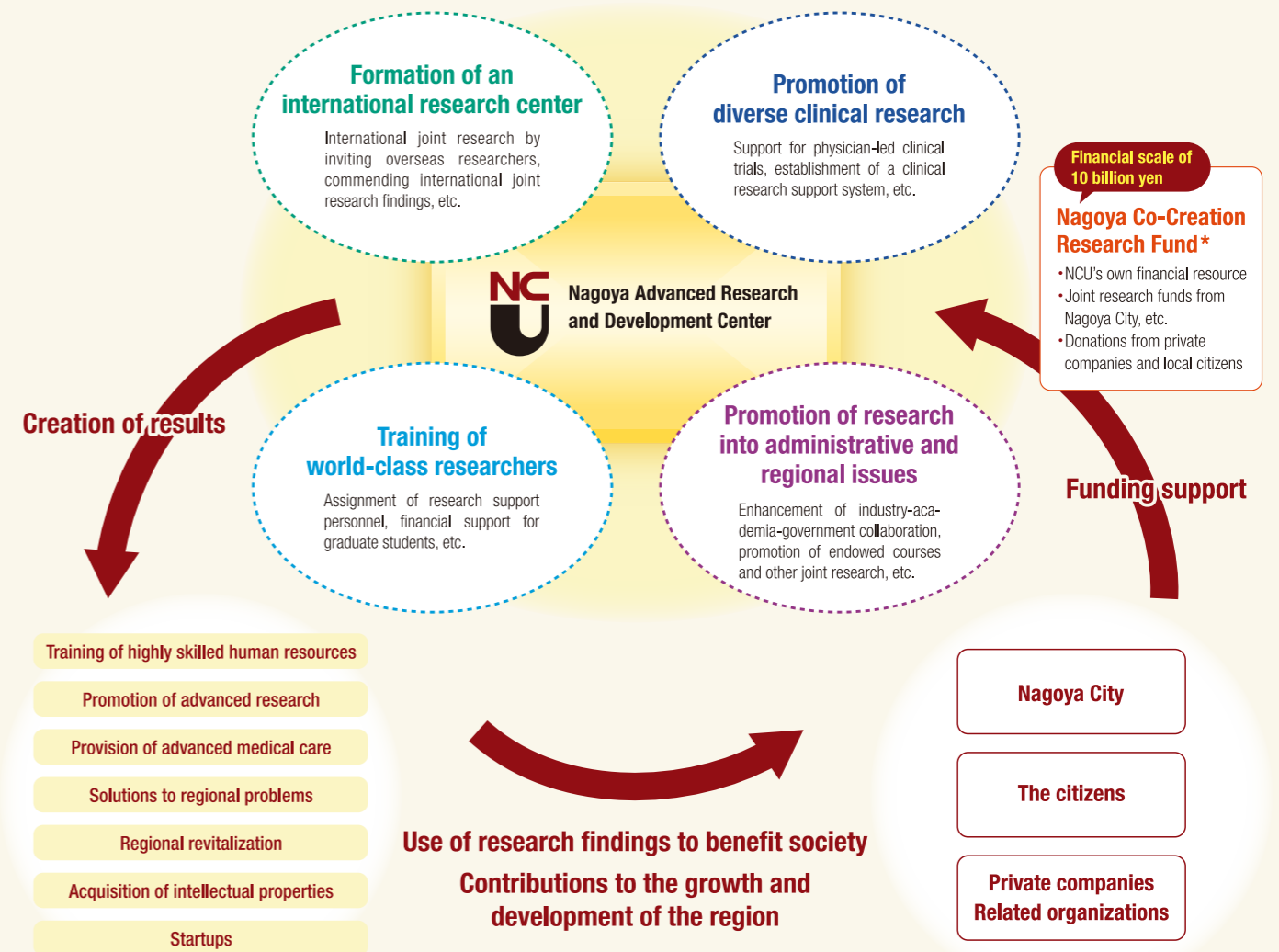


### Our key phrase: Bringing smiles into people's lives through research

Research takes place over long periods of time. There are countless hardships to be overcome behind-the-scenes. However, researchers continue to pursue new discoveries day and night, aiming to bring smiles to people's faces at the end of their long research journey. Waiting at the end are the smiles of the researchers and, more importantly, smiles on the faces of the rest of humanity. Each completed study is another step toward a richer life. In many cases, research that at first glance may seem esoteric and out of touch with our daily lives is actually something very relevant to us and can put smiles on our faces. We believe that NCU's leading-edge research will bring smiles into our lives and lead toward a brighter future.

## The mission of the Nagoya Advanced Research and Development Center

The Nagoya Advanced Research and Development Center will contribute to the formation of a better society by solving social issues, both locally and globally, supported by the following four pillars: the formation of an international research center, promotion of diverse clinical research, training of world-class researchers, and promotion of research into administrative and regional issues. To achieve this, in addition to our own financial resources of 5 billion yen obtained through NCU's management efforts as well as joint research funds from Nagoya City, we also make use of the Nagoya Co-Creation Research Fund\*, which aims to raise 10 billion yen in research funds through donations from private companies, related organizations, and local citizens, to enhance our research capabilities as we work to communicate to the world and contribute to the region.



### \*What is the Nagoya Co-Creation Research Fund?

Primary research funding comes from the NCU's own focused investment of funds and joint research funds (endowed courses) from Nagoya City to address administrative issues in the region. Based on this funding, we aim to promote diverse research within the university, form an international research center, train world-class researchers, and further contribute to the local community, while at the same time establishing a sustainable research cycle through which intellectual properties resulting from this research are reinvested into the next round of research funding.

We first aim to raise 10 billion yen in research funds over the next 10 years, while soliciting donations from private companies and local citizens who support the University.